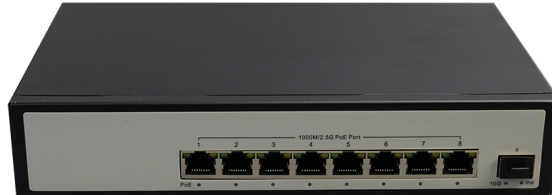

2.5G Connected to the 10 Gbit/s upstream dump switch

Model: SZ5208-ACPB



Product overview and features:

SZ5208-ACPB is a layer 2 Ethernet switch, which can meet the needs of cost-effective 2.5G access and 10 Gigabit uplink for enterprise networks and operator customers. SZ5208-ACPB uses a high-performance low-power network processor, provides Gigabit line-speed forwarding performance, support Flexible forwarding strategy. The switch can be widely used in security network video surveillance, hotels, campuses, and network engineering of small and medium-sized enterprises.

Product Feature:

- 8 * 2.5 G Base-T POE port +1* 10 G SFP ports
- Support IEEE 802.3、 IEEE802.3u、 IEEE 802.3ab、 IEEE 802.3bz、 IEEE 802.3ae、 IEEE 802.3x
- Ethernet port support 10/100/1000 m / 2.5 G adaptive
- Supports automatic port rollover (Auto MDI/MDIX)
- Panel indicators monitor working status and assist in fault analysis
- Flow control mode, full duplex adopts IEEE802.3x standard, half duplex adopts Backpressure standard

-
- Support lightning protection: common mode 6KV; Electrostatic air 8KV, contact 6KV

Hardware specifications:

项目	SZ5208-ACPB
Port	8*10/100/1000/2500M Base-T POE, 1*1000M Base-X SFP/10GE SFP+
Exchange capacity	60Gbps
Packet forwarding rate	44.64Mbps
MAC	4K
Multicast	4K
power	AC: 100 ~ 240V 47/63Hz; DC: 12V ~ 75V;
Power consumption	≤120W
Dimensions	230*148*44mm
(Width * height * depth)	Working Temperature: -10°C ~ 55°C
Environment temperature	Storage temperature: -40°C ~ 70°C